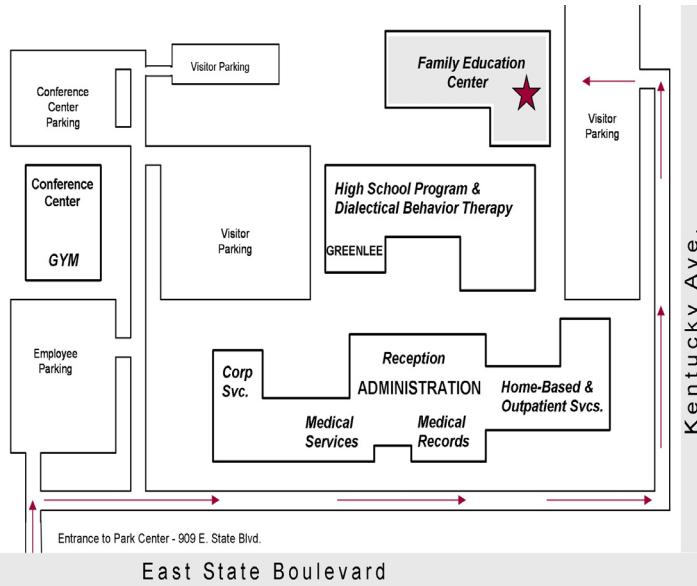


**Park Center's Family Education Center is located at the main Park Center site:**


**909 E. State Blvd., Ft. Wayne, IN 46805**



## *Family Education Center*

**EVERY CHILD DESERVES A CHANCE TO SUCCEED ACADEMICALLY AND EMOTIONALLY. THE NEED IS EVEN MORE VITAL FOR CHILDREN WITH SEVERE BEHAVIORAL OR EMOTIONAL PROBLEMS.**

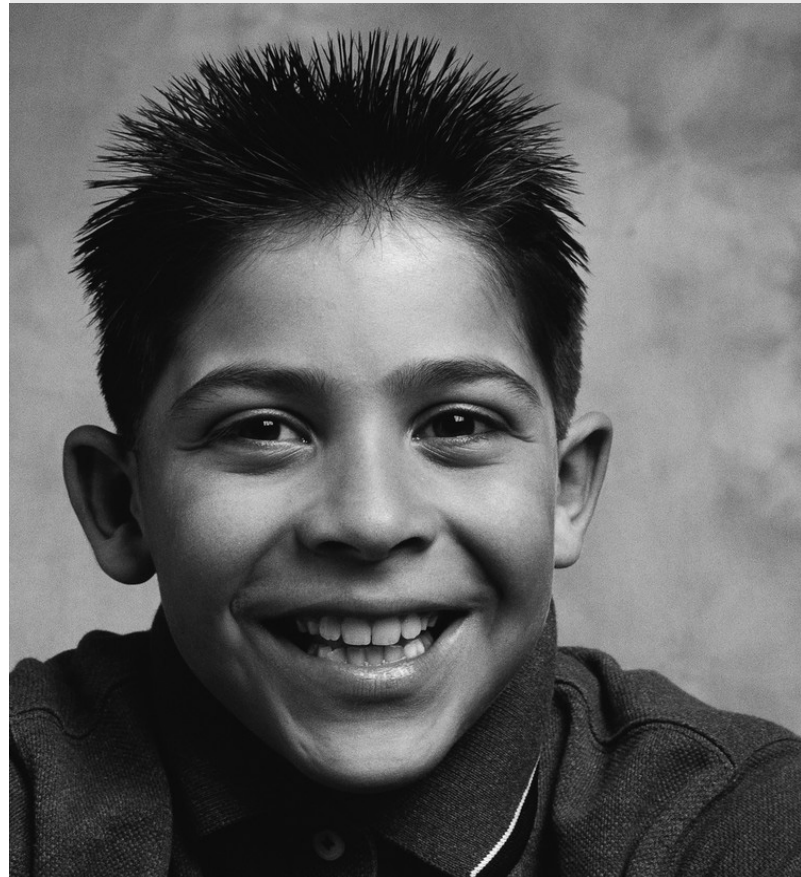
**260-969-4814**  
**or toll free: 1-866-481-2700**

Family Education Center Services accredited by: 



***restoring lives***

MAIN LOCATION: 909 EAST STATE BOULEVARD  
FORT WAYNE, INDIANA 46805  
260-481-2700 OR 1 866-481-2700  
WWW.PARKCENTER.ORG





# Family Education Center

*Severely troubled youth need professional intervention in order to function well at home, at school, with friends, and in the community.*

**S**ome children and adolescents within the school setting require intensive intervention to stabilize and improve their functioning so learning can occur. Park Center's Family Education Center offers specialized services that can help change the lives of youth. We help youth attain:

- **Emotional stability**
- **Self-esteem**
- **Positive coping skills**
- **Increased attention span**
- **Academic improvement**
- **Fewer negative behaviors**

The Family Education Center provides services focusing on behavioral intervention, offering proven strategies in a structured, nurturing, and positive setting:

- **Intensive Treatment**, behavioral treatment focus for children ages 3 - 6
- **Summer Programs**, 1/2 day

Group-focused and interactive treatment is directed by each child's individual treatment plan. The therapeutic environment provides the structure for children and youth to develop understanding, assimilate healthy new behaviors, increase self-confidence, and gain social skills.

***ALL programs provide individual, group, and family therapy as well as parent support.***

Programs available with school district referral for behavioral intervention are:

- **Grade School Intensive Treatment Program\***, Grades K - 5, 5 days per week
  - 1/2 day a.m. Academic
  - 1/2 day p.m. Social/emotional treatment
- **Middle School Intensive Treatment Program\***, Grades 6 - 8, 2 sections, 5 days per week
  - 1/2 day a.m.: Social/emotional treatment
  - 1/2 day p.m.: Social/emotional treatment then core subject tutoring by FWCS staff late p.m.
- **High School Treatment Program\***, Grades 9 - 12, 4 days per week
  - Early p.m.: Social/emotional treatment
  - Late p.m.: Core subject tutoring by FWCS staff

\* Programs offered in collaboration with Fort Wayne Community Schools. Placement depends on school referral / IEP determination. Credit for High School portion may be available.



**For more information or to make an appointment, contact us at :**

**260-969-4814**

**Family Education Center offices are located at:  
909 E. State Blvd., St. Ft. Wayne, IN 46805**



*The mission of Park Center is to restore lives. By partnering with consumers, we strive to support and facilitate their journey toward health.*

[WWW.PARKCENTER.ORG](http://WWW.PARKCENTER.ORG)